

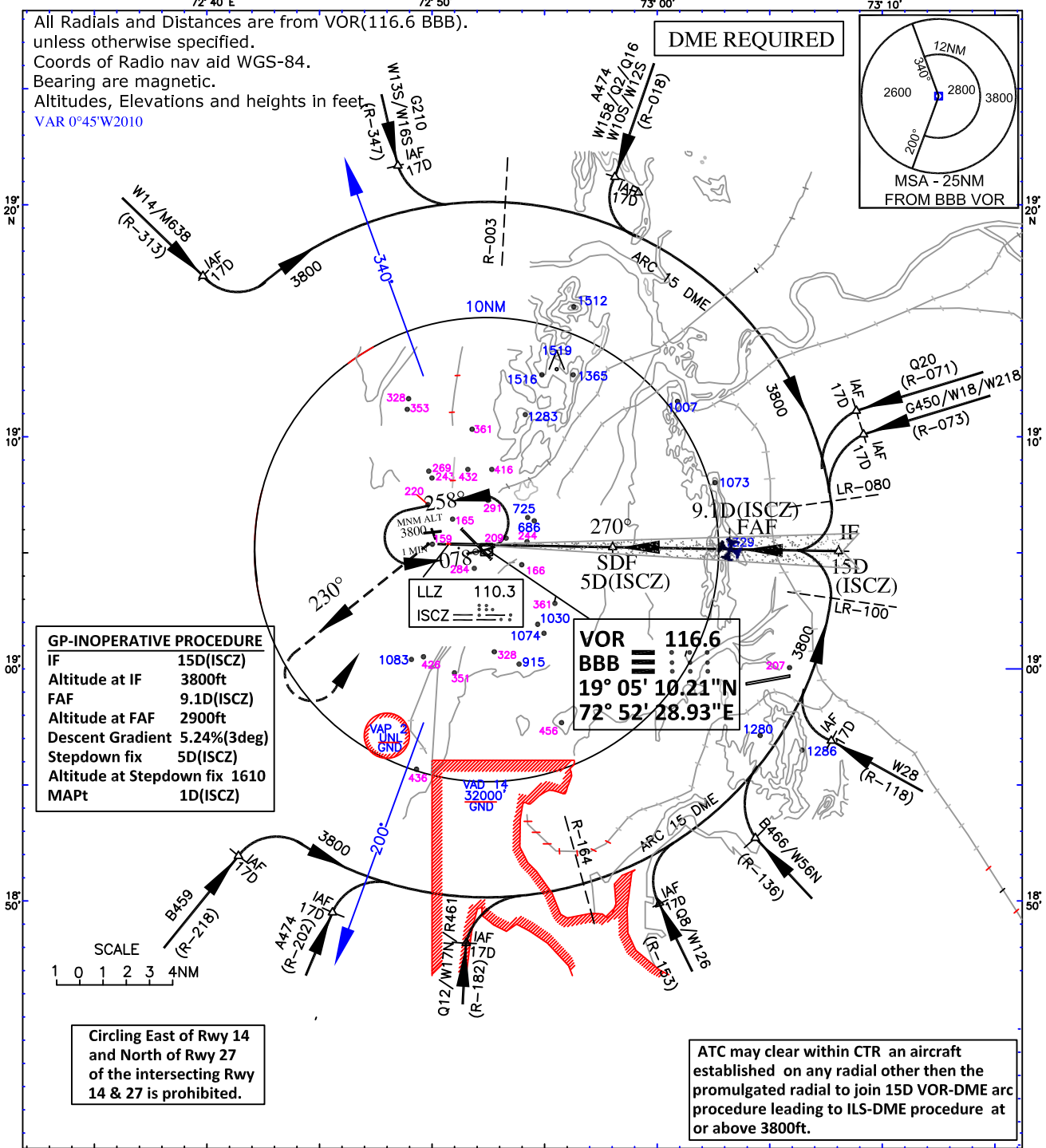
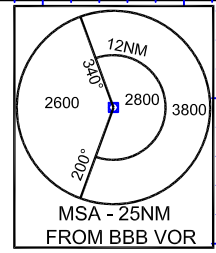
INSTRUMENT APPROACH CHART

AERODROME ELEV. 40ft
HEIGHT RELATED TO THR RWY 27 - ELEV. 23ft

APP 127.9
TWR 118.1

MUMBAI(VABB)
INDIA
ILS (Y) RWY 27

All Radials and Distances are from VOR(116.6 BBB).
unless otherwise specified.
Coords of Radio nav aid WGS-84.
Bearing are magnetic.
Altitudes, Elevations and heights in feet
VAR 0°45'W2010



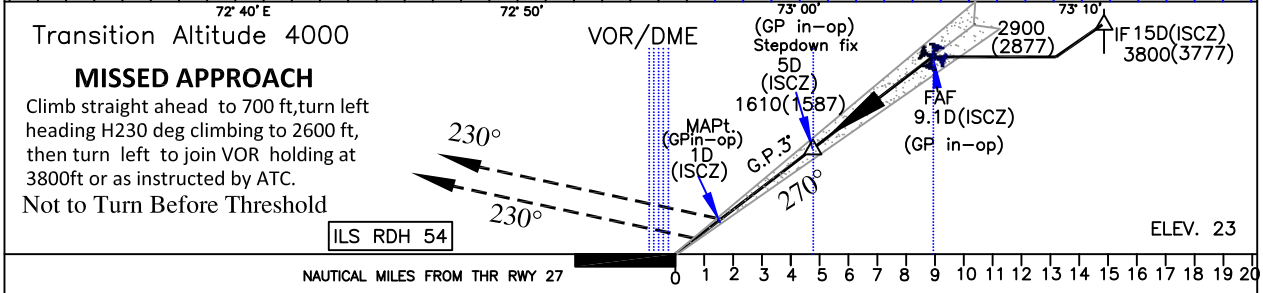
GP-INOPERATIVE PROCEDURE

IF	15D(ISCZ)
Altitude at IF	3800ft
FAF	9.1D(ISCZ)
Altitude at FAF	2900ft
Descent Gradient	5.24%(3deg)
Stepdown fix	5D(ISCZ)
Altitude at Stepdown fix	1610
MAPt	1D(ISCZ)

VOR 116.6
BBB
19° 05' 10.21" N
72° 52' 28.93" E

Circling East of Rwy 14 and North of Rwy 27 of the intersecting Rwy 14 & 27 is prohibited.

ATC may clear within CTR an aircraft established on any radial other than the promulgated radial to join 15D VOR-DME arc procedure leading to ILS-DME procedure at or above 3800ft.



Transition Altitude 4000

MISSED APPROACH
Climb straight ahead to 700 ft, turn left heading H230 deg climbing to 2600 ft, then turn left to join VOR holding at 3800ft or as instructed by ATC.
Not to Turn Before Threshold

ILS RDH 54

ELEV. 23

O C A (H)				Distance (ISCZ)/Altitude information for G.P.inoperative procedure											
CAT. OF AIRCRAFT	A/B	C	D	Distance(NM)	9.1D	8D	7D	6D	5D(SD)	4D	3D	2D			
STRAIGHT-IN	230(207)	230(207)	230(207)	Distance(NM)											
G.P.inop procedure	540(517)	540(517)	540(517)	Altitude (ft.)	2900	2560	2250	1930	1610	1290	970	650			
				Rate of Descent /Ground speed information (G.P.in-op. procedure)											
				Ground speed (kt.)			80	100	120	140	160	180			
VISUAL CIRCLING				1380(1340)	1480(1440)	1700(1660)	Rate of descent (ft./min)			425	530	635	740	845	950

DRG. NO. AAI/-IALC/04/24.07.18